

Mechanical Service Tools

August 2019



Group Email*:

CumminsMechanicalServiceTools@cummins.com

**To subscribe or unsubscribe to a direct emailed monthly update, email us.*

Warranty Communication Self-Serve Subscription Form

**To subscribe to this and other service/warranty related newsletters, please sign up for the ServiceLine Newsletter via the link above.*

Electrical Connector Database:

<https://quickserve.cummins.com/ecdb/index.html>

Tools Catalog on QSOL:

<https://qsol2.cummins.com/qs3/portal/manualviewer.html?path=/qs3/pubsys2/xml/en/outlines/3377710.html>

Disclaimer

The information in this packet does not carry any classification, therefore it is suitable for distribution to anyone that has interest in genuine Cummins service tools.

The information was deemed correct to the best of our knowledge at the time of publication.

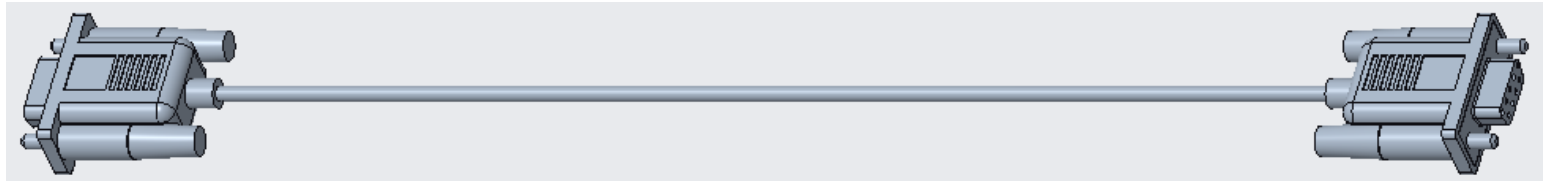
Any tool availability dates are estimates and subject to change without notice.



New General Purpose Tools Available Soon



5590881 – Datalink Adapter Communication Harness

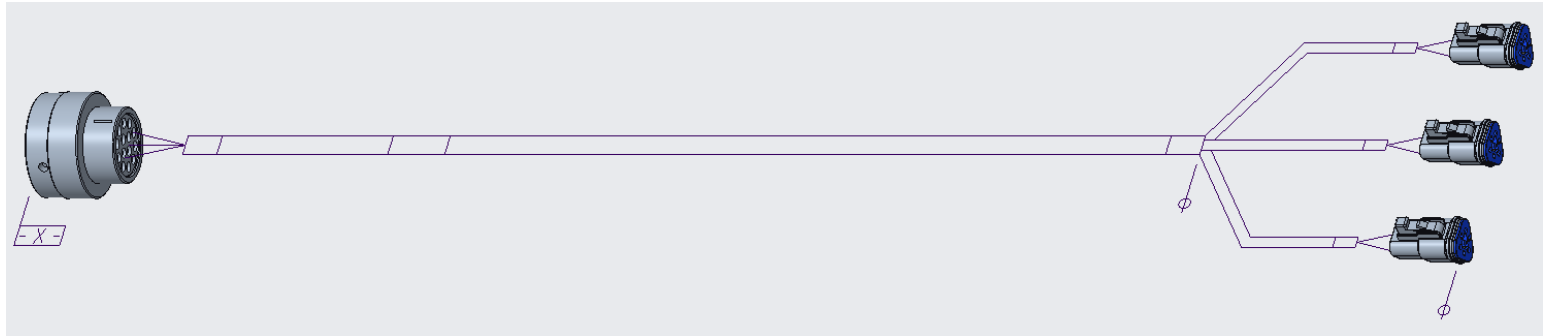


- 1 ft long harness, DB9F female trapezoidal connector on one end, DB9M male trapezoidal connector on the other.
- This extension cable connects datalink adapter kit 5299129 to the thruster interface module on MC101 systems
- Due to be available for purchase in November 2019.

New Tools Available Soon For Electric Powertrain Vehicles



5572919 – Datalink Adapter Communication Harness

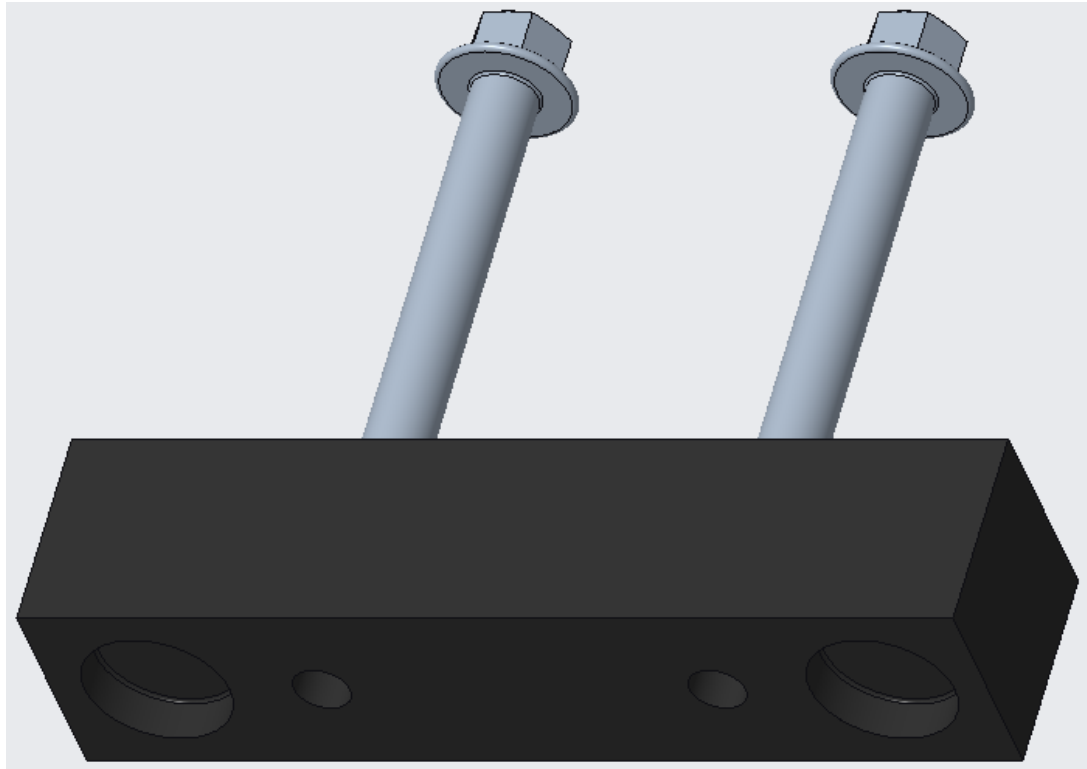


- This harness plugs into the dashboard 14 terminal diagnostic connector and provides quick connection points for a datalink adapter to be able to communicate with devices on the CAN 1, CAN 2 or CAN 3 networks.
- Used on the BES CM904 EV104B system.
- Due to be available for purchase in December 2019.

New Tools Available Soon For 15L & Smaller Engines

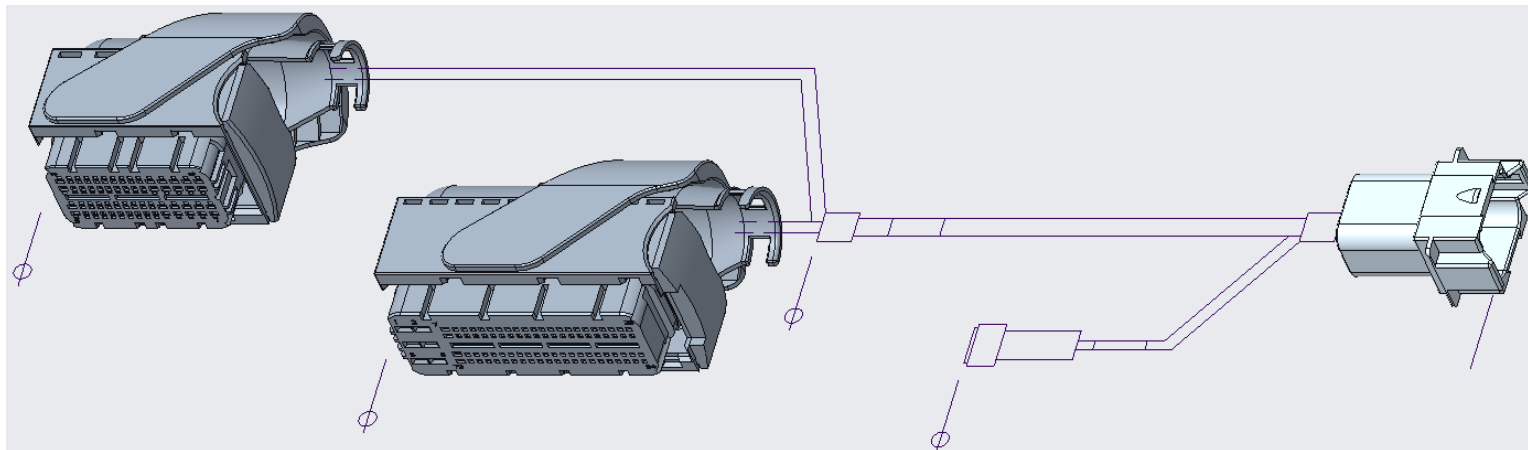


5572913 – REPTO Gear Remover Kit



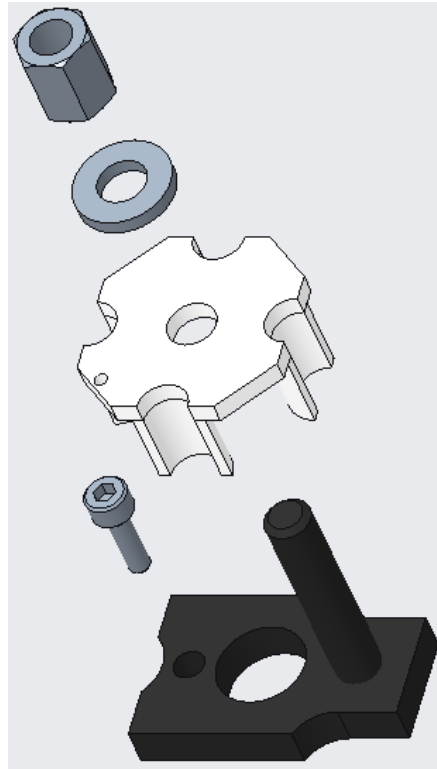
- The kit is used with gear remover ST-647 to remove the rear gear adapter for the Dual REPTO Stage-5 B and L engines.
- Due to be available for purchase in November 2019.

5572846 – Bench Calibration Harness (ECM Specific)



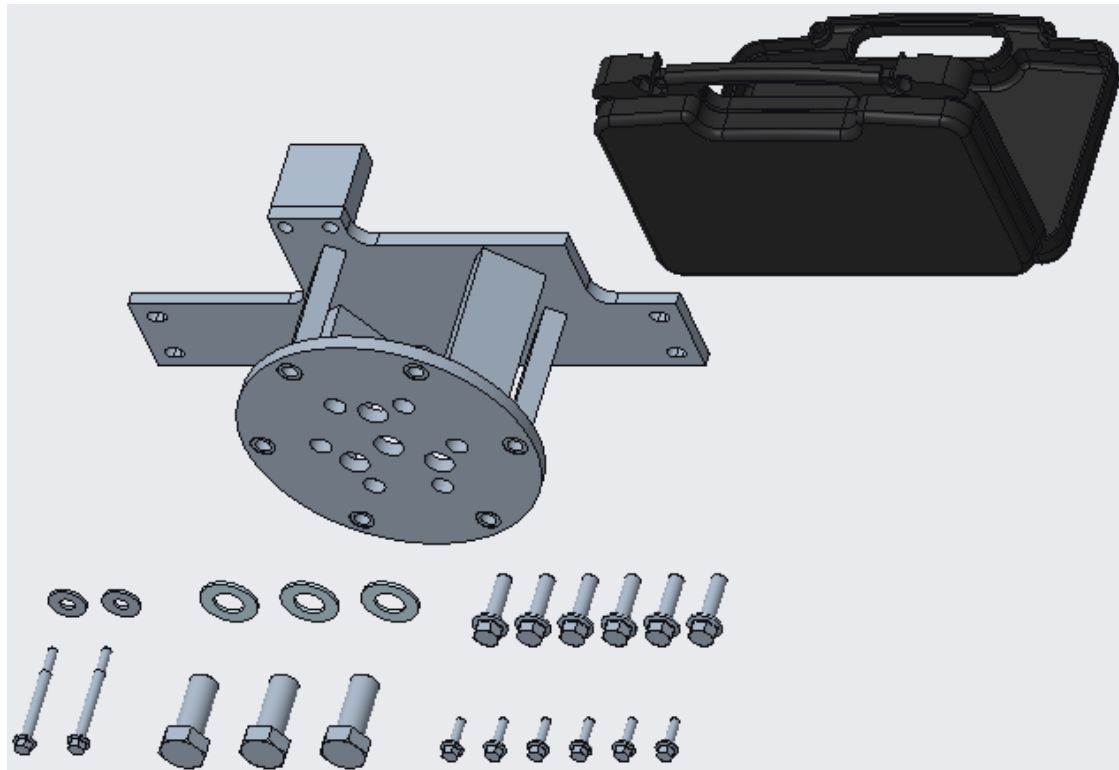
- Used for bench calibrating CM2620 ECMs only.
- Use with parent harness 3163151.
- Used on F2.8 CM2620 F135B, F2.8 CM2620 F136B, F4.5 CM2620, F3.8 CM2620, B4.5 CM2620, D4.5 CM2620, D4.0 CM2620 D103B, B4.0 CM2620 B154B engines.
- Due to be available for purchase in November 2019.

5572973 – Valve Spring Compressor Kit



- The kit is used to compress the valve springs to remove and install the valve stem collets. Used on F135 & F136 series engines.
- Due to be available for purchase in November 2019.

5572714 – Engine Rebuild Stand Adapter Plate Kit



- This kit is used to mount the Z103 family of engines onto the mobile & stationary engine rollover stands for out of chassis maintenance work.
- Used with rebuild stands 3375193 & 3375194.
- Due to be available for purchase in December 2019.